



**INVESA FABTECH**  
WE MAKE FABRICATION SIMPLE



A Unique and  
Innovative Solution for  
**Quality product & Responsive services**  
For Entrance Automation



Residential



Industrial



Commercial

Sales Inquiry : +91-9019604612, 9353638908

[www.invesafabtech.com](http://www.invesafabtech.com)

[Info@invesafabtech.com](mailto:Info@invesafabtech.com)



**INVESA FABTECH**  
WE MAKE FABRICATION SIMPLE

## ABOUT US

Invesa Fabtech are recognised for providing not just value for money, But also quality products and responsive services that consistently meet demand of the Indian market place. We offer Fabrication and automation product system to suit all residential, commercial, Industrial & high-rise projects.

Invesa Fabtech is an organization made of experienced people with rich experience from diversified industries, MNCs and experienced in delivering the solution for Automation Entrance, Parking & Logistics Products for many years. Established with an aim to serve imperative products and services through automation products; Invesa Fabtech is established to emerge as the concept and innovator in Entrance Automation industry for Residential, Hotels, Hospitals, Workplace, Shopping places and Industrial solutions to clients' custom needs. Setting the move in the strategy, installation of personalized, cost effective automatic entrance products, parking solution equipment and access control products.

We operate from Bangalore with in-house manufacturing facility for fabrication of products i.e. gates, doors and industrial products to meet customized requirement and designs. Our association with manufacturers of automation products ensures the alignment on products developments that deliver state-of-the-art technology in time. We offer highly personalized service and innovative entry solutions to our clients with market leading warranties for peace of mind. Our detailed specifications and quotation provided ensures we deliver your requirements in time within your budget.



**INVESA FABTECH**

## OUR PROCESS



## PHILOSOPHY



Customer  
Focus



Quality



Innovation



Product  
Consultancy



Promptness

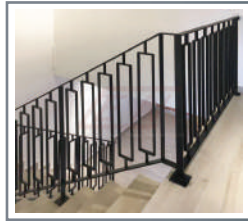
**INVESA FABTECH**

# FABRICATION



**Ms Gate**

We are the leading manufacturer and supplier of a vast gamut of Stainless Steel Main Gates. These products are precisely fabricated using supreme grade factor inputs and the most advanced technology under the strict supervision of our quality experts. We offer these products in numerous sizes and dimensions in order to meet the diverse requirements of our esteemed customers.



**MS Railing**

We are leading company involved in manufacturing and supplying a wide array of Staircase Railings. Offered products have rigid construction and are available in various specifications. Moreover, these are available in market at competitive prices.



**HPL Cladding**

As a premium wall cladding material, high-pressure compact laminate (HPL) clads strike a perfect balance between aesthetics and durability. They find applications both on the interior and exterior walls as laminate wall panels. HPL cladding is a favorite among designers and architects as it allows them to give their projects a unique appeal. If you too are looking for an elegant and modern appeal, it is advisable to consider HPL cladding as the wall cladding material



**Building elevation**

We help architects, builders, developers, interior designers, and even direct individuals who are willing to get exterior cladding for their buildings or projects for domestic as well as commercial purposes. With a partnership with builders and architects, we have completed several turnkey projects. We can guarantee nothing but the delivery of quality projects with time assurance. We have a wide variety of items for front elevations and house flooring. We have our own team of experts and experienced installers.



**Security Grill**

Safety Grill is the most essential components to design your home and ensure the safety. But it's also really important to ensure security as these are entry points to your building. Such entry points can also look trendy apart from being functional. We have collated a list of designs that might end your long search of window grill design. Browse through this article to get inspired for your next window grill structure.



**Structural work**

Structural steel is one of the materials which used for any kind steel construction, it is formed with a specific shape. These steel materials are of certain standards of chemical composition and proper strength. The steel materials are also defined as hot rolled products, having cross sections like angles, channels and beam. All across the world, there is an increasing demand for steel structures.



**Aluminium fabrication**

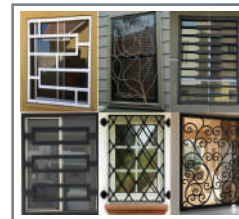
Most manufacturers that work with metal have some form of experience with aluminum one of the most popular metals for fabrication. Aluminum's resistance to corrosion, high conductivity and top strength-to-weight ratio along with the material's ease of recyclability. Aluminum is softer than other common manufacturing metals and is significantly easier to bend into the desired shape.



**Collapsible gate**

Our collapsible gates are galvanised for corrosion resistance and then powder coated. You can choose from a wide range of powder coating colours. The gates are locked in multiple places with a single key for convenience. They run on a smooth carrier system and can be custom built to suit almost any opening.

The Barricade grille is quick and easy to use. For very wide openings we can install multiple sections of grilles



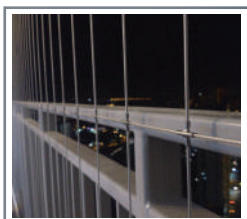
**Windows Grill**

Doors and windows are some of the most essential components to design your home. But it's also really important to ensure security as these are entry points to your building. Such entry points can also look trendy apart from being functional. We have collated a list of designs that might end your long search of window grill design. Browse through this article to get inspired for your next window grill structure.



**Glass Glazing**

The term 'glazing' refers to the glass component of building's facade or internal surfaces. Our services include Structural Glazing Semi-Unitized System, Frameless Glazing Service, Structural Glazing in Unitized System, Spider Glazing Service and Structural Glazing in Stick System. All these services are carried out in compliance with the industry standards and are offered at economical prices



**INVISIBLE GRILLES**

In today's world, safety at the place, be it our home, society, office, school or commercial buildings is the prime factor. Made of 316G Stainless steel and coated with nyloncoated, 2mm cable is capable of supporting tensile impact up to 400 kg. Our invisible grilles are safe for your children and pets, without obstructing your view! The cable distance can be 2",3"& 4" inches, installation can be vertical or horizontal.



**Domal windows**

Leveraging the skills of our qualified team of professionals, we are instrumental in offering a wide range of domal windows in Bangalore, India. We are engaged in manufacturing a huge array of domal windows to our customers. Classical Interiors is known to be one of the finest manufacturers of an impeccable range of domal windows. We are the leading company known as domal windows manufacturers in Bangalore. We are dedicatedly involved in providing an excellent quality array of Domal windows, various needs of many sectors.



**Stainless Steel Work**

All main gates are built to your dimensions at no extra cost. We also fabricate inheritance design, odd lengths as well as devise your design. Being successful Stainless Steel Main Gate operators, we know the binary accountability. Consequently, we have designed a variety of gates which are unyielding quite to endure the elements and guard the house. The Raw-materials employed are non-corrosive, low preservation and sturdy. The designs designed by us are assured to unite an aristocratic element to the threshold of your home.



**UPVC windows**

uPVC windows (Unplasticized Polyvinyl Chloride Windows) are in trends and are being widely used because of its low cost, easy installation and as it enhances the beauty of your house. It is easy to install anywhere and even it adds great value to your house.



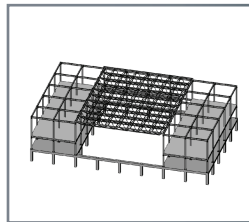
**Aluminium windows**

Contemporary, sophisticated, robust, and easy-to-use - that is what aluminium windows stand for. These windows with their ability to withstand all climatic changes have made their way onto everyone's list in recent times.



### Steel Structure Fabrication

We design, supply, fabricate and erect a wide spectrum of structural steel works for Buildings, Factories, Plants and Infrastructure. The use of steel frame structures is found in many high rise commercial buildings as steel frame structures are versatile and have better weight-to-loading ratio than concrete structures. Furthermore, as steel frame structures can be pre-fabricated in workshops and transported to the project site for assembly and erection, there is a marked reduction in wet works as compared with conventional concrete works.



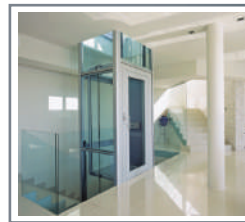
### Structural Roofing

we help you design and build the perfect roof for your home. Whether you want a clay-tiled roof, a terrace roof, a skylight roof, a shingles roof, a UPVC roof, a polycarbonate sheet roof, a puff insulated roof or something even more unique, your need is a challenge and we never run away from one.



### Fire door

Fire Doors are designed to suppress the spread of fire, smoke and toxic fumes throughout the building by keeping it contained within a certain area for a longer period of time. If fire event occurs in the environment with fire doors installed then occupants/inhabitants will have extra time to escape from the building where the damage will also be minimal.



### Hydraulic Lift

Our domain expertise enabled us to provide an exclusive gamut of Hydraulic Lift that are widely used in multi-story buildings. These elevators are highly durable as these are manufactured using premium quality raw material procured from reliable vendors. These elevators are manufactured by a team of expert professionals making optimum utilization of advance technology and modern tools & equipment. Offered elevators are fabricated as per the international standards and thus ensure excellent functioning. Customers can avail these elevators from us in various specifications in accordance with their needs.



### Turnstile

If you want to keep a tab on the people who are entering a specific location like the office or any other area then installation of proper access control system is the best option. In our day to day life, we can see such systems in railways station, bus stands, metro stations and other public places. While access cards, finger print sensors and other biometric sensors are very efficient in identifying the individuals who are entering the facility, the issue of tailing cannot be addressed with these options. In such situations and places installation of turnstile gates is the most appropriate option with their needs.



### Tyre Killer

Tyre Killer is an electro hydraulically operated heavy duty spike barrier which rises above the ground level on giving a valid input signal and thus prevents unauthorized intrusions at entry/exit points of high security premises. When the tyre killer is in a lowered position the vehicles can pass through, thereby providing a good enhanced security blockage system



### Bollards

Automatic retractable bollards are used alone or with combination of Boom Barrier to give highest level of security from forceful entry of unauthorized vehicle. A round cylinder of Stainless Steel or MS pop up from ground to restrict forceful entry. Bollards are available in various rating i.e Traffic , K4, & K12



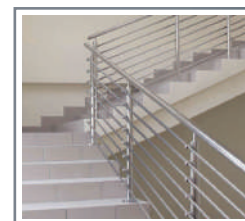
### Retractable Gates

Retractable Gates offered by Invesa Fabtech stands out amongst others because they blend flawlessly with its surroundings. They not only match the building installed with the gates, but are a piece of eye-catching architectural work with high functionality and artistic value.



### High Speed Door

We are characterized by their high-quality components and well-conceived design. These High Speed Doors can be used both inside and outside in sheltered areas that have low wind loads and moderate temperature. High Speed Roll up Doors curtain are made of high tear tensile strength Imported PVC material.



### SS Railing

Owing to our domain expertise, we are able to offer extensive range of SS Railings for the products. These Railings are robustly fabricated using the top notch quality of raw materials source from the authentic vendors of the market. We make these railings accessible in wide spectrum of designs, patterns and sizes.



### Aluminium Partition

We are offering Aluminium Partition Works service as per the requirements given by the clients. The entire service is rendered under the precisely designed requirements of clients, such as the space and length of partitions. We offer this service to our precious clients at pocket friendly prices within stipulated time frame.



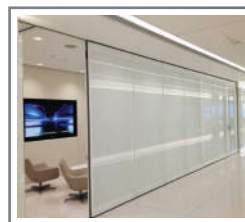
### Home Automation

Home automation is nothing but the automatic control of electronic devices in your home. These devices are connected to the Internet, which can be controlled remotely; one need not be physically present. With home automation, devices can activate each other without manual control and through an app or voice assistant.



### Shower cubicles

Our elegant looking shower cubicles are available in different specifications such as shapes, sizes, and designs as per the requirements of our clients. With many types of shower cubicles, we'll find the perfect fit for your bathroom whether it's framed or frameless. In Bangalore, we offer the widest range of shower enclosures for residential, hospitality, and many other sectors within the promised time frame. Our shower cubicles are known for its attractive features such as: stylish and eye-catching design, unmatched quality, durable, high strength, easy installation, smooth finish, attractive look, perfect finish and etc.



### Glass partition

Enriched by our vast industrial experience, we are involved in offering an enormous quality range of office glass partition in Bangalore. We offer a comprehensive range of sliding and folding glass partition. We are one of the well-established organizations that are engaged in providing glass partition that is widely used in offices and commercial buildings. We are one of the well-known companies which holds a good reputation for complete interior and exterior glass partition services in Bangalore.



### ACP glazing work

Aluminium composite panel is a modern building cladding material which is used primarily for external facades. The offered panels are available in a wide range of colors and patterns as per the evolving market trends at a leading price. Our aluminum composite panel are available in various thickness and are used at different places like malls, restaurants and many other commercial or residential buildings in Bangalore

# ROLLING SHUTTER



**MS ROLLING SHUTTER**

Stainless Steel shutters or SS rolling shutters are used for securing things in a slightly moist and corrosive environment. Ordinary mild steel is prone to rusting but the stainless steel is relatively more stable and safe as they contain a larger proportion of chromium in them. Although ss rolling shutter is costly when compared with MS shutters but they are safe to work in a number of places where MS shutters cannot be used. Moreover, the stainless steel has a lustre and finish that increases the aesthetic appeal of these shutters. As a result they are utilised in shopping malls and prime business areas as they are better when compared to MS shutters.



**ALUMINIUM ROLLING SHUTTER**

Aluminium is considered to be light, sturdy and durable material. Its anti-rust and weather friendly properties makes it quite reliable its terms of lasting and insulation value. Aluminium also provides high-quality surface look which lasts many years and is most preferred due to low maintenance cost of painting etc. Aluminium rolling shutters are particularly suitable to wide door openings which have to withstand harsh weather conditions.



**AUTOMATIC ROLLING SHUTTER**

Motorized Rolling Shutter is the ideal solution where protection against burglary, vandalism, storms and trouble free operation with safety is first priority. Rolling Shutters are most popular and widely used as they are very easy to operate and require low maintenance. These shutters are best suit to warehouses, factories, industrial units, shopping mall entrances, garages and large apertures.



**GRILL ROLLING SHUTTER**

Rolling shutters are excellent solutions for workshops and other storage spaces but for a shop or for places where the items for sale are on show, it requires a special kind of shutters that offer security without hindering the visibility of the materials that are inside the shops. These grill rolling shutters are perfectly safe as it prevents entry of any people. It also prevents any wilful damage of the property as the grill protects the interior from the things that are being hurled into.



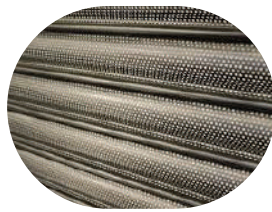
**SS ROLLING SHUTTER**

If you are looking for rolling shutter manufacturers in Bangalore, you are at the right place. Invesa is a leading manufacturer in Bangalore and we are also the pioneer in automation of security systems in the city. We also undertake works in other parts of the country and we take pride in our ability to deliver above and beyond the expectations of our customers. We manufacture various types of shutters that are custom made to fit your requirements.



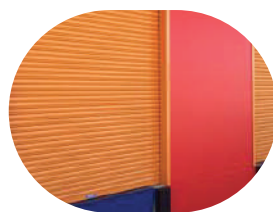
**GI ROLLING SHUTTER**

GI rolling shutter door are ideal for Industrial and Commercial use where security is a primary concern. They are very versatile and come with Slat material options-in mild and galvanized steel which prevent the shutters from rusting and helps to provide them a long life. These Steel roller shutter doors are cost-effective solution for any kind of application & provide protection against burglary, vandalism and storms. These doors can be custom built to suit the requirements of windy areas & are meant to withstand harsh climatic conditions.



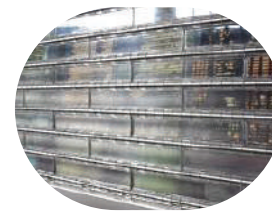
**PERFORATED ROLLING SHUTTER**

Perforated Rolling Shutters are an ideal method of securing premises such as shopfronts whilst maintaining the see through aspect when the shop is backlit. Used extensively in shopping malls and high street retail premises, perforated roller shutters present a most economical method of providing a secure closure to large or small openings. The shutters are robust and have a long life with little maintenance required. Perforated Lath Roller Shutters have been supplied on many prestigious projects in Bangalore and come with the technical design and back up for which the company is known for.



**POWDER COATED ROLLING SHUTTER**

Aluminium is considered to be light, sturdy and durable material. Its anti-rust and weather friendly properties makes it quite reliable its terms of lasting and insulation value. Aluminium also provides high-quality surface look which lasts many years and is most preferred due to low maintenance cost of painting etc. Aluminium rolling shutters are particularly suitable to wide door openings which have to withstand harsh weather conditions. The shutters are provided with weather seal & can be powder coated to any color in this case.



**POLYCARBONATE ROLLING SHUTTER**

Invesa have wide range of polycarbonate rolling shutters, which are perfect to be installed in malls to have clear transparent visibility & security. The polycarbonate shutters are available in various sizes as per specification. The polycarbonate links are interlocked with each other with 16mm dia 3mm thick aluminium tubes, the ends are closed with pvc caps. The doors can be installed for maximum width of 14 mtrs. The shutters bottom is provided with weather seal & can be powder coated to any color.

# ENTRANCE AUTOMATION



## DOCK LEVELERS

Dock Levelers is placed at the exterior of the building in a loading bay. This is an actual bridge between the loading area and the vehicle, so as to balance out all the difference in height and distance. It enhance safety and productivity by avoiding multiple handling of the loads



## AUTOMATIC GATES

Automatic gates are used to control access into a secured area. Most commonly, automatic gates are used at the entrance to the facility, and are used to control vehicular access on and off of the site. For example, automatic gates are commonly used within the inside of a parking garage to separate employee parking areas from public areas of the garage



## Cctv CAMERA

With so many different types of CCTV cameras on the market, there are now a variety of solutions for every industry. As a result of this huge range, it can be difficult to choose which CCTV camera is right for your business.



## VIDEO DOOR PHONES

Welcome any visitors to your building in style and save the cost of a reception service. Not only do you get comfortable communication, but thanks to the integrated camera you also reinforce your entrance access security.



## ELECTRO-MECHANICAL LOCKS

When choosing between the likes of a standard mortice lock or more advanced options, it makes sense to go for one that utilises the best of modern technology.



## SWING GATE AUTOMATION

Swing gates are probably the most popular & widely used of all, as they present well and are very functional. The gates can be designed to swing either inward or outward.

We manufacture a precision range of automatic swing gates in different compact designs, tolerances and are extremely easy to install. Ideally our all automatic swing gates are set up on a structural metal frame; good quality pivots (hinges) or wheels.



## SLIDING GATE AUTOMATION

Motorized sliding gates (conventional) are gates which use a ground mounted track for the gate wheels to move on. Tracked sliding gates can have larger opening widths. A pedestrian gate can be combined with these type of gates or a separate pedestrian gate can be built. Company can produce motorized sliding gates as per client's requirements.



## AUTOMATIC GARAGE DOOR

The garage door is the most common way for people to enter the home. It can also be a big security risk if you leave it open. Now you can easily connect your garage door to your smart home system and stay in control. Your garage door can be controlled through a mobile app. This allows you to easily see if you left it open, and open or close it from anywhere.



## ROLLING SHUTTER MOTOR

Our expert team members, we have been able to offer a wide range of Rolling Shutter Motor. These are available with us in various technical specifications and range as per the precise demands and requirements of clients. Our finely designed devices are available in various range and modes.



## AUTOMATIC SENSOR GLASS DOORS

Our highly skilled and experienced professionals we are engaged in providing Automatic Sliding Glass Door. The offered sliding door is designed at our manufacturing unit by using quality glass or other allied material in accordance with the set standards. This sliding door provides entrance solutions for practically any application. Also customers can avail this sliding door from us within the estimated deliver time.



## CURTAIN MOTOR

We are engaged in the Distributor and Wholesaler, export and trade of Motorised Curtain Track that is made in adherence to the preset industry standards. Available in manual and automation system, these motors and tracks are east to install and operate.



## BOOM BARRIER

Automatic boom barrier offers security at the exit and the entry points of industrial unit, offices, corporate houses, residential areas, parking lots, toll tax plazas etc. Automatic barrier can be used to successfully control pedestrian and vehicle traffic. It can be used achieve better security. High performance Boom Barriers. It suitable for any type of installation atmosphere. The wide range of lengths and accessories available ensures that all installation requirements are met. All models are equipped with a facility of manual operation in the event of power failure and battery back-up capability in selected models.



## ACCESS CONTROL

An access control system is the first step in protecting your people, property and assets, by tracking and restricting door, gate or other entry point access to a property, building or room to authorized persons. With an access security system, you know exactly who enters a building or room, when they enter and what door they use. Access systems include analytics that allow you to track where your employees are and receive reports of suspicious activity, such as attempts to access restricted areas

# INVESA FABTECH

## OUR CLIENTS



## OUR PARTNERS



9019604612, 9353638908

Info@invesafabtech.com

www.invesafabtech.com

Narayanappa Building 1st Main,  
7A Cross, Maruthi Layout,  
Dasarahalli, H.A.F Post, Hebbal,  
Bengaluru, Karnataka 560024

